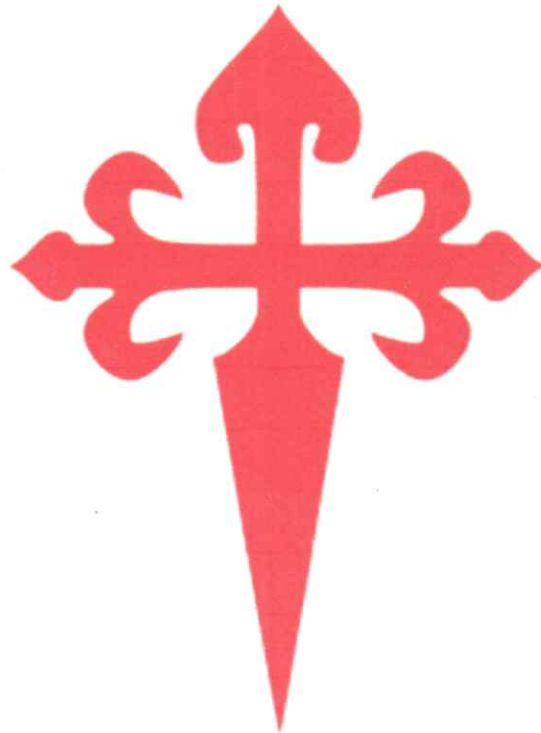


*A*nslow *R*olleston *T*utbury *Churches Magazine*

JULY  **AUGUST** 



2024



**Feast of Saint James
the Apostle 25th July**

*Contributions for September 2024 edition by
14th August please*

30p per Copy £3 per Year

A.R.T. PARISHES MAGAZINE

Welcome to the July and August 2024 Edition of the Magazine for the Churches of Anslow, Rolleston-on-Dove and Tutbury.

Dear Friends

All change... or is it?

I am writing this in mid-June. Next week is Midsummer's night. This afternoon, in Rolleston, we had brilliant clear blues skies and sunshine, and the next moment it was dark overhead, with rain and hail. The Junes of my childhood and younger adult years felt warmer than this. Is this climate change? If it is, I hope and pray we are not too late to make a difference in our stewardship of creation.



We are halfway through UK election season. The polls predict a different colour of government after 4 July. There may be changes in priorities and policies in Westminster. Paul in Romans 13 affirms that all governments are instituted by God and lead with his authority. He exhorts his friends (and us) to honour and pray for their leaders, and to pay taxes! (Romans 13:7).

There are wars and rumours of wars worldwide. Peace seems just a dream. There are changes within the Church of England. General Synod is 5 – 9 July. Topics include Investments, Chancel repairs, Safeguarding, Human dignity, Clergy and Lay Conduct and "Living in Life and Love", with prayers of same-sex blessings.

Adding to this, we have reduced clergy numbers, even in our deanery. Revd George Crossley Stretton and St Chad's Burton, retired in May. This will mean changes to our service patterns, as clergy are shared between more parishes.

Sadly many of us have friends or family members who are ill, some facing significant surgery, with likely lifestyle changes. We hold them in our prayers.

The world often feels a disorientating and unsafe place. Change seems the default setting in most all walks of life now. It is easy to lose heart, and lose faith.

A theme in some June services was The Bible, with the gospel reading of *Mathew 7:24-29* – the parable of the wise and foolish builders. Do we build on the rock or on sand? The Bible is full of God's promises to never leave us, but to be our steadfast rock e.g. *Hebrews 13:8*, *James 1:17* and *Deuteronomy 31:6 18:2*. I am reminded of the metrical psalm 34 we sang in my Granny's Scottish Presbyterian church.

Even in change and upheaval, we depend on God, and we chose to worship.

"Through all the changing scenes of life, in trouble and in joy,
The praises of my God shall still my heart and tongue employ".

Yours, in my prayers,

Phyllis

Phyllis Bainbridge (Revd).

Rector, ART Benefice: Anslow, Rolleston and Tutbury

A.R.T. CHURCH SERVICES

JULY AND AUGUST 2024

Please check Facebook, NIPs and emails, and/or contact the Rector or the churchwardens for latest information and news .

<u>DATE</u>	ROLLESTON		TUTBURY	ANSLOW
	AM	6:30pm	10am	11.15am
Sunday 7 July	8am BCB Communion 9:15am CW Communion	BCP Evensong	W4A* Communion	CW Communion
Sunday 14 July	9:15am CW Communion	BCP Evensong	Communion	BCP Communion
Sunday 21 July	9:15am CW Morning Prayer	BCP Holy Communion	Communion	BCP Matins
Sunday 28 July	9:15am Worship for All*	BCP Evensong	Communion	CW Morning Prayer
Sunday 4 August	8am BCB Communion 9:14am CW Communion	BCP Evensong	W4A* Communion	CW Communion
Sunday 11 August	9:15am CW Communion	BCP Evensong	Communion	BCP Communion
Sunday 18 August	Open Church	St Mary's day BCP Holy Communion	Tutbury Day Communion	Open Church
Sunday 25 August	9:15am Worship for All*	BCP Evensong	Communion	CW Morning Prayer

NOTES:

* **W4A = Worship for All.** A service particularly suitable for children to attend. It is in the context of Communion in Tutbury, and Service of the Word in Rolleston and Anslow. There is usually an activity pack (a wordsearch, crossword, a colouring sheet, a craft related to the service theme) to take home or do in church after the service.

On Sunday 18 August we celebrate the Patronal feast of St Mary, which through the years became "Tutbury Day". This year is the 935th birthday of Tutbury Church. Phyllis has invited Bishop Matthew to preach and preside at our special and extra Benefice service. He will preach on Mary, the mother of Jesus. Miss it, miss out!

Midweek Communion - Rolleston Thursdays at 9.30am - Common Worship Holy Communion.

This is followed by Coffee Club, 10am to 11.30am in the OGSR.

Parish Records

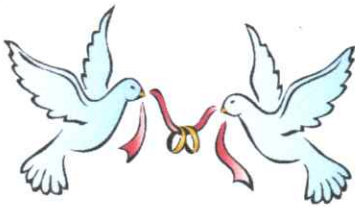
Anslow, Rolleston & Tutbury Benefice

BAPTISM AND THANKSGIVING SERVICES

Saturday 1 June 2pm Tutbury Baptism of Sena Kirkpatrick
 Sunday 2 June 2pm Anslow Baptism of Hudson Baker
 Sunday 9 June 2pm Tutbury Baptism of Mylo Moynihan
 Sunday 23 June 2pm Rolleston Baptism of Edward Winspear
 Saturday 10 August 2pm Rolleston Baptism of Christopher Gallimore
 Saturday 10 August 2pm Tutbury Baptism of Charlotte Leavesley
 Sunday 25 August 2pm Tutbury Baptism of Thomas Fraser



WEDDINGS



Sat 8 June 2pm Tutbury Louise Dyke and Sean Gallagher
 Fri 12 July 2pm Anslow Laura Bacon and Oliver Ludlow Sat
 24 Aug 3pm Rolleston Alexandra Owen and Adam Walker
 Sat 21 Sept 3pm Tutbury Joanne Darby and Chris Dockray

Recent Deaths and funeral services in the ART Benefice

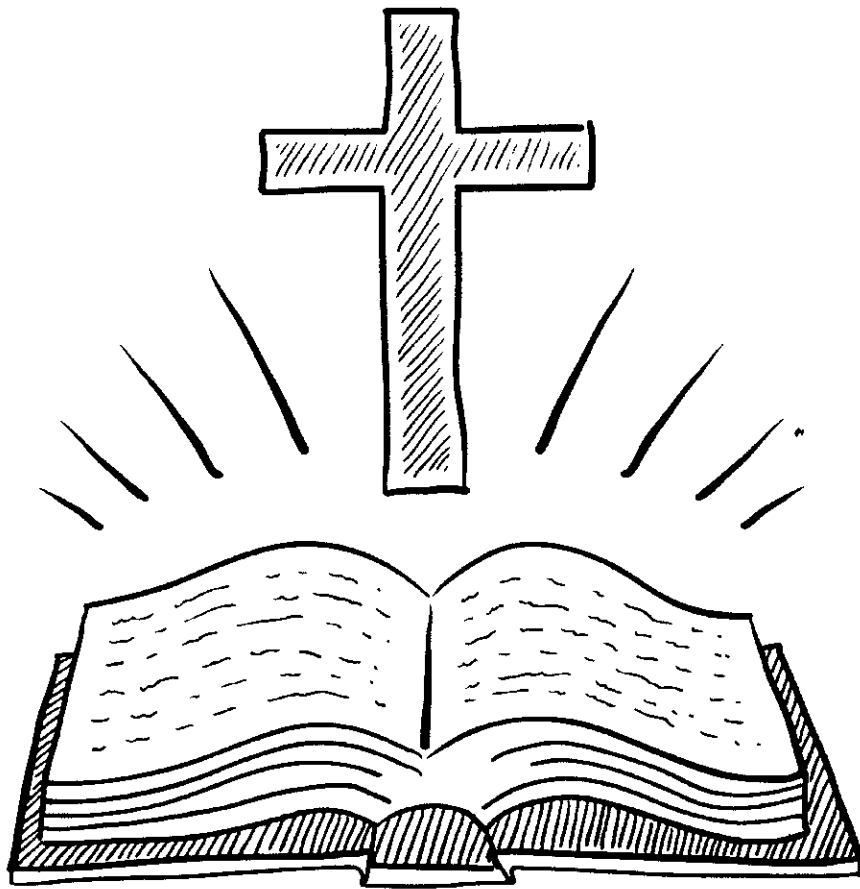
The following are people whose families requested a church funeral, burial of ashes or who have had contact with our churches around the death of their loved one



Deceased's Name	Died on	Service	Details
Peter J H Smith	22.08.23	06.06.24	Burial of ashes in Anslow Churchyard
Sarah Woodhall	06.05.24	12.06.24	Rolleston Cemetery
Phillip Docksey	09.05.24	13.06.24	Bretby Crematorium
Ian David Cuthbert	27.02.24	22.06.24	Ashes into Tutbury Churchyard
Geoffrey Ebberley	09.06.24	04.07.24	Rolleston Church and Rolleston Cemetery
Bramwell Morgan	06.04.24	13.07.24	Memorial service in Tutbury Church
Joyce M Heywood	15.06.24	tbc	Tutbury Church then burial in Churchyard

An ART Magazine
Summer Pull-out and Keep Supplement

*Why and how
to read the Bible?*



Food for thought in summer 2024

Holy
Bible

Sacred, special, set apart
same root word as library e.g. French *bibliothèque*

39 books in OT
27 books in NT

c.f. Hebrew scriptures, agreed and settled by 250 AD.
agreed at Councils of Hippo (AD 393) Carthage (AD 397)

Food for Thought in Summer 2024

A couple of weeks ago, the psalm set for the day was **Psalm 1**, a wisdom psalm. King David writes,

*"Happy (blessed) are those who do not follow the advice of the wicked, or take the path that sinners tread, or sit in the seat of scoffers;
2 but their delight is in the law of the Lord,
and on his law they meditate day and night".*

The statement *"their delight is in the law of the Lord"* is key.

At that time King David would only have had the first 5 books of the Hebrew Scriptures ie the Old Testament, as we know it today. They were the psalmist's delight.

Let's explore **why and how** the bible can be a delight for each of us too.

There are many genres in the Bible... (see page 4 of this supplement)
law, history/narrative, poetry, prophesy, letters, and apocalyptic literature.

The Bible is uniquely...

popular The world's best-selling book. research in 2021= 5-7 Billion copies.
Some researched, it is 1 sold every 6.4 seconds.

powerful The ability to change lives

precious In many parts of the world, even today, the bible is banned.

Many Christians who meet in secret have one bible between a whole congregation.

Why? Matthew 4 v 4. "One does not live by bread alone,
but by every word that comes from the mouth of God."

What is the Bible?

A Manual for life

God has spoken to us through his son Jesus Hebrews 1 v 2.

Through creation

Romans 1 v 20

Through the Holy Spirit eg prophesy, sometimes through dreams, words of
Knowledge, through other people and God-coincidences.

Mainly through the Bible.

Paul in a letter to Timothy, a young minister, a trainee church leader.

2 Timothy 3 v 16,17. ¹⁶ All Scripture is God-breathed" (NIV)

¹⁶ All scripture is inspired by God and is useful for teaching, for reproof,
for correction, and for training in righteousness, ¹⁷ so that everyone who belongs to
God may be proficient, equipped for every good work. (NRSV)

If we accept the bible is God-inspired, its authority stems from that.
If it is God's word, then it is our supreme authority for what we believe and how we act.

"For teaching and rebuking / reproofing"

Our authority on what we believe i.e. **our creed.**

"For correcting and training in righteousness"

Our authority on how we act i.e. **our conduct.**

The Bible as a manual for life, but it is more than that.

The Bible is **a love letter from God.**

The Bible shows us how we can enter into a transforming relationship with God, through Jesus Christ. 2 Corinthians 3 v 18

Our relationship is two-way.

We speak to God in prayer and worship.

God speaks to us in many ways but especially through the Bible.

What happens when God speaks to us?

God brings faith to those who are not yet Christians.

God speaks to those who already follow him.

God brings joy and peace even in crisis. Psalm 23 v 5

Guidance Psalm 119 v 105

Healing Proverbs 4 v 22

Defence against spiritual attack. e.g. Jesus in Mathew 4 v 1-11

The How in Practice. Time is an issue for all of us. c.f. exercise!

If we are going to read the bible, plan ahead. Diary it in.

Set realistic goals

Better to read a few verses daily rather than trying to read big chunks.

Jesus got up early and went to a solitary place. Mark 1 v 35.

Find out when and where works for you.

Begin with the New Testament – the gospels, then Acts, then the letters.

Pray before reading, "please God, speak to me through your Word today".

The Bible Course hints...

Ask **What?** What did this passage mean in its context?

Ask **Now what?** What does this passage mean for my life today?

Putting God's word into practice. Matthew 7:24-28. 'Build on the Rock.'

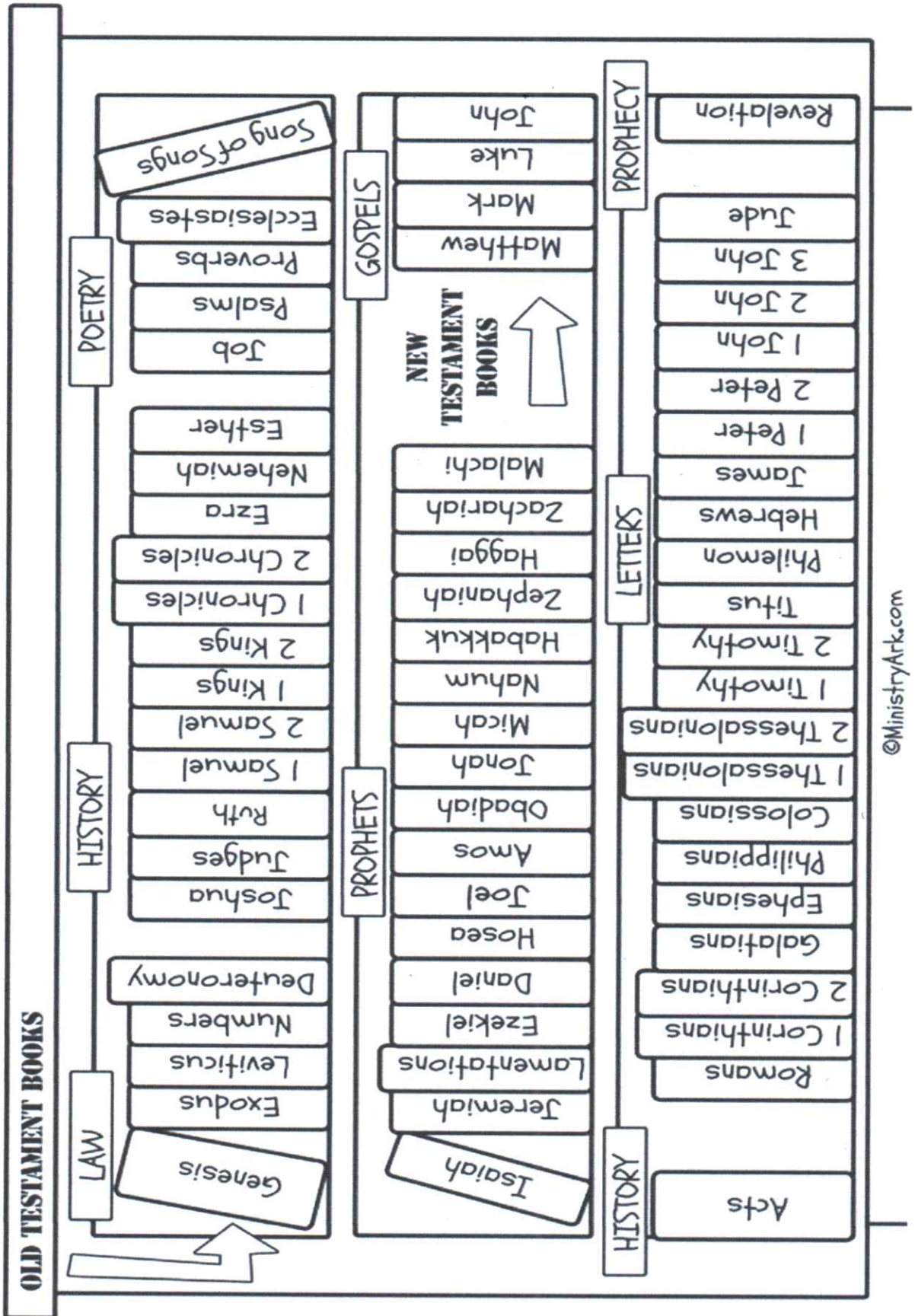
**"The Bible is not given to increase our knowledge;
it is given to change lives".**

D L Moody, the American evangelist pastor preacher. 1837 – 1899.

A bible Library Colour Page....

Perhaps give books of the same genre in the same colour?

Books of the Bible



Tutbury News 1

Regular Church Opening Times

Thursdays - 10am—12pm, Priory Crafters

Saturdays - 10am - 12pm, Priory Pantry

Sundays - 9.30am—12.30pm, Service at 10am

Priory Pantry every Saturday 10am to 12pm.

Priory Crafters every Thursday from 9.30am

Diary for St Mary's Tutbury

Forthcoming Events - *Keep looking out for details in the NIPS and future editions of ART!*

- **Friday, 5th July** - Friday Voices' Summer Concert in the Church

Saturday August 17th – Tutbury Day Celebration - 935 years since the Tutbury Priory was founded (in 1089) - Details to follow

- **Monday August 26th** - Pipes in the Pantry

- **Saturday September 7th** - Murder Mystery Evening - Village Hall - With Tutbury Arts Group

Saturday September 28th - Harvest Hoe-down at the Village Hall - Details to follow

- **Saturday November 9th** - Poppy Proms with Burton Concert Band

- **Saturday November 30th** - Christmas Fayre - extended Priory Pantry with stalls and Carols

Uttoxeter Choral Society - Mozart's Requiem - 25th May

This is now becoming a regular feature at St Mary's Priory Church as the Society appreciate the acoustics that are so perfect for their performances. They gave a beautiful concert to a full church and the audience gave them a warm welcome, which was appreciated by the Society members.

Some members returned and performed on the following Monday at the bank holiday Pipes in the Priory. As in previous years, the Society made a substantial donation towards the upkeep of the Church, which is much appreciated.

Pipes in the Priory - 27th May

PIPES IN THE PRIORY A huge thank-you to Roger for the work he puts in for these Bank Holiday Concerts. Not only does he have to do extra practice himself, he also has his work cut out getting the choir into shape. We were also entertained by Janice Topliss, whose beautiful voice always pleases our audiences.

Again, the soups were delicious, thank you ladies. Our thanks to the audiences who support these events throughout the year – a total of £207.00 was raised at last Monday's concert. The final concert of the 2024 season will be held on Monday, 26th August, when it is hoped that guest organist John and Singer Janice, plus those who augment the choir will join Roger – same time, same place, same price!

An evening with Peggy Knight - Friday, 28th June

We, as always, greatly appreciate Leslie Smith's performances in our Church. A full report will appear in the September edition.

Tutbury Open Gardens Weekend - 29th and 30th June

We will be reporting on this major event in the village in the September edition.

Our Bookstall

This is at the back of the church and brings a steady income to church funds. You will be interested to know that we have been able to refresh the eclectic book collection; something we hope to do regularly. Why don't you come on Saturdays to Priory Pantry and have a browse and a chat.

Tutbury News 2

Mothers' UNION
Christian care for families

Dear Friends

Summer seems to have arrived at last and just in time for our meeting on 20th June, which was held in Pat Guest's summer house. Our grateful thanks go to our hostess for her hospitality and her delicious home-made cakes. However, I must stress that before this, we did deal with a dozen items on our agenda including prayers!

Just a small selection of items in no par-



ticular order:

1. Staffordshire County Show went well. I think Janice and I were lucky to be in the Church tent on the Thursday as it was rather wet underfoot on the previous day.
2. Diary Dates
 - i) 14th July - LDMU AGM at Doxey
 - ii) 9th August - Mary Sumner Day at Lichfield Cathedral. Meeting 2pm at Janice's house.
 - iii) 2nd November - Autumn Diocesan Meeting at Doxey
 - iv) 25th July - next branch meeting at 2pm at Janice's.

I am in danger of running out of magazine space, so will have to stop now. Please do give me a call if you would like to find out more or think you might like to join us./

/.... The next edition will definitely include a report about our visit to Walsingham.

Love and God bless from us all at Tutbury Mothers' Union.

Sue Norris .07817 281695

theWI
INSPIRING WOMEN

Tutbury WI

At our meeting on 13 June, we had a lovely evening with the talented Sue Cake. She was, as usual, an entertaining speaker.

Her subject, this time, was about painting with wax with aid of an iron. The wax is dotted onto a small craft iron which can serve as a hot iron as well.

Sue produced many abstract type pictures and cards in some lovely details which was very inspiring. At the end of the evening many of our members had a try at producing pictures with many surprising results and gave us all an insight into this new craft which may result in new hobbies.



Online Payments/Donations

We are now firmly in the 21st Century where you can make contactless payments at the Priority Pantry and other events, make donations using your mobile on our Sumup Terminal (Or just scan the QR Code below to "give a little")



No Cash ?

Scan the QR Code with your phone camera to donate online with a GiftAid option via "Give a Little" to Our Church



Benefice Matters

Friday Fish and Chips Film Evenings

We are pausing for holidays in July and August then restart on 27 September.



The Prayer Course 2024

The Prayer course is now completed for both the Monday morning and Tuesday evenings groups. There is a prayer course "party" with wine and nibbles on **Tuesday 9 July at 7pm in the Rectory** when we will be watching a film together. *Hint hintit is about Prayer, and God!*

Several people have suggested an ongoing, perhaps fortnightly prayer and /or Bible event. Watch this space for details in the Autumn.

PCC Secretary for Tutbury Church.

This much valued roll will include taking minutes at PCC meetings and other leadership meetings including the APCM (Annual Parish Church meeting), dealing with correspondence for and behalf of Tutbury Church. For further information on this role, please contact the Wardens.

Something Extra for the Holidays

Wordsearch

p	p	g	i	a	n	t	s	f	c	t	c
c	e	g	y	p	t	z	b	k	a	r	a
g	o	d	c	m	i	d	c	c	l	u	r
v	p	u	a	w	b	a	e	q	e	s	e
b	l	r	n	c	t	b	n	s	b	t	p
o	e	e	a	t	h	e	b	r	e	w	o
r	g	f	a	b	r	a	h	a	m	r	r
d	t	r	n	d	d	y	s	l	l	w	t
e	z	u	l	o	e	t	y	e	a	i	y
r	b	i	g	g	e	r	z	o	d	n	d
t	h	t	n	h	j	o	s	h	u	a	d
c	o	m	p	l	a	i	n	o	r	t	h

country	Caleb	giants
complain	Joshua	north
people	chased	land
Egypt	leaders	win
children	Hebrew	fruit
bigger	Canaan	trust
Abraham	God	report
desert	border	attack

Benefice Matters (Continued)

BENEFICE RECIPE

Please do contact Phil, the editor if you want to contribute a recipe in future editions.

Our Benefice Recipe contribution this month is great as a party food:

Cherry Meringue Bar

Recipe

- Whites from 6 medium size eggs
- 300g Castor Sugar

For the FILLING:

- 150ml double cream
- 1 tbs kirsch liqueur (optional)
- 1 level tbs castor sugar
- 1 large 125g can cherry pie filling

Method

1. Heat oven to 130deg C (gas mk 1).

Draw 3 rectangles 250mm(10") x 150mm (6") of greaseproof paper to fit 2 baking sheets, then brush with oil.

2. Place egg whites in a bowl and whisk until stiff, but not dry. Whisk in half the sugar, then fold in the remainder, cutting through mixture until all the sugar has been incorporated.

3. Place a quarter of meringue mixture into a piping bag fitted with a large star tube. Divide remaining meringue between the marked rectangles on/

/... the paper and spread out evenly with back of spoon. Pipe reserved meringue in shells around edge of one meringue bar, to form a case.

4. Place in coolest part of the oven. Leave the oven door slightly ajar and dry out meringue for 2 to 3 hours

5. Leave to cool, then carefully peel off paper.

6. Place cream, kirsch, if used, and sugar in a basin; whisk until thick. Open can of cherry pie filling.

7. To serve: Place one plain meringue bar on a serving dish. Spread with one third of cherry pie filling. Cover with remaining plain meringue bar and spread with cream. Top with the piped meringue case and fill with remaining cherry pie filling.

NOTE: Meringues may be made up to 2 weeks in advance and stored in an air-tight container. Assemble the bar 1 hour before serving.

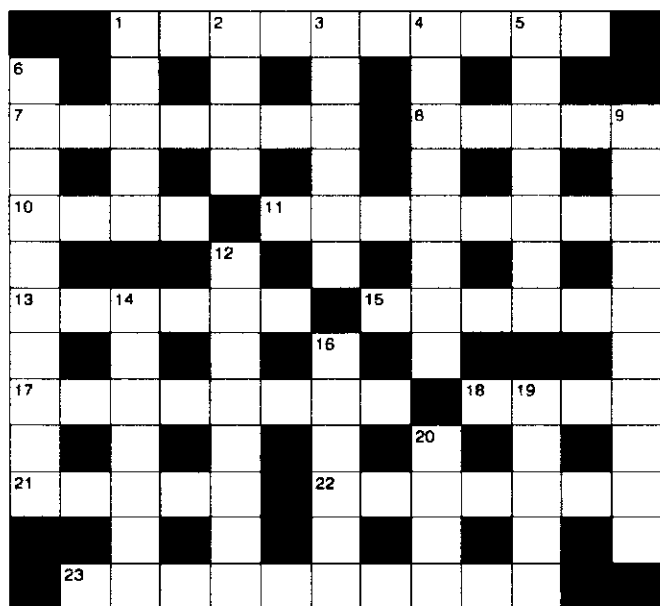


ACROSS: 1, Sabbatical. 7, Opinion. 8, Laing. 10, Olga. 11, Galilean. 13, Sardis. 15, Severe. 17, Adultery. 18, Flea. 21, Swazi. 22, Acetate. 23, Revelation.

DOWN: 1, Sling. 2, Brim. 3, Annual. 4, Ill-timed. 5, Abilene. 6, Colossians. 9, Gennesaret. 12, Diatribe. 14, Roulade. 16, Errata. 19, Learn. 20, Levi.

FUN TIME

CROSSWORD



Across

- 1 Relating to the Jewish day of rest (10)
- 7 Point of view (Matthew 22:17) (7)
- 8 20th-century Brethren philanthropist whose construction company became one of the UK's biggest, Sir John — (5)
- 10 Girl's name (4)
- 11 Peter was accused of being one in the courtyard of the high priest's house (Luke 22:59) (8)
- 13 The fifth of the 'seven churches' (Revelation 3:1-6) (6)
- 15 'Now the famine was — in Samaria' (1 Kings 18:2) (6)
- 17 Banned by the seventh Commandment (Exodus 20:14) (8)
- 18 Insect most closely associated with itching (1 Samuel 24:14) (4)
- 21 Bantu tribe which gives its name to tiny landlocked country in southern Africa (5)
- 22 Familiar material in churches that use an overhead projector (7)
- 23 Last book of the Bible (10) /

/...

Down

- 1 The young David's favourite weapon (1 Samuel 17:40) (5)
- 2 'Your vats will — over with new wine' (Proverbs 3:10) (4)
- 3 Once yearly (Exodus 30:10) (6)
- 4 Milled it (anag.) (3-5)
- 5 Region north of Damascus of which Lysanias was tetrarch (Luke 3:1) (7)
- 6 Comes between Philipians and 1 Thessalonians (10)
- 9 Lake where the first disciples were called (Luke 5:1-11) (10)
- 12 Abusive outburst (8)
- 14 Are loud (anag.) (7)
- 16 Printing errors (6)
- 19 'Take my yoke upon you and — from me' (Matthew 11:29) (5)
- 20 Jacob's third son (Genesis 29:34) (4)

.... Check your answers on Page 16/

SuDoku

4		9	3
7	2		5
	2	8	4
4	3	6	1
7	6	5	
6		7	3
3	5		2
	5		

© 2008 KrazyDad.com



**Community
Foundation**

Staffordshire

Philanthropy House, Priestly Court, Staffordshire Technology Park, Stafford, ST18 0LQ

Shropshire

Office 11, M54 Space Centre, Halesfield 8, Telford, TF7 4QN

Reg. Charity No. 1091628 Reg. Company No. 04220563

Grant funding is available for constituted community and voluntary groups and registered charities working with the boundaries of East Staffordshire.

The J&O Lloyd Fund is a grants programme made available by a private endowment and administered by the Community Foundation for Staffordshire and Shropshire; an independent charity dedicated to strengthening local communities across the counties by building endowments and allocating grants to eligible groups who need them.

Groups based in East Staffordshire are invited to apply for grants of up to **£10,000**. The panel can consider small or large projects – there is no minimum grant amount. If your group needs funding for an upcoming project or support to continue the service you provide, you may be eligible for a grant during the next funding round in October. All costs can be considered but examples of previously funding projects include upgrading playground equipment, providing furniture for community centres and funding for a support worker to aid people at risk of homelessness.

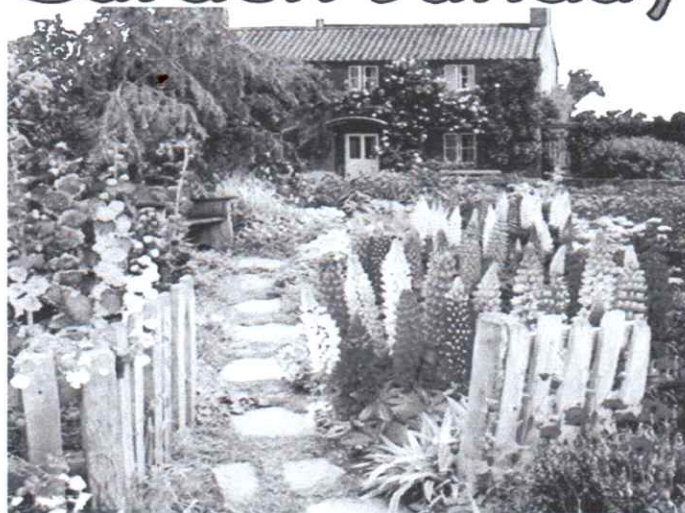
Please visit the Foundation website to read the full criteria and start an application -

<https://staffordshire.foundation/grants/jolloydtrustcommunitygrants/>

or get in touch with Sian Emery, the dedicated Programmes Officer for this fund, by phone on **01785 339548** or email **sian.emery@staffordshire.foundation**

Applications received before **8th October** will be considered by the panel at a meeting on 22nd October.

St Mary's Church ~ Rolleston on Dove
Garden Sunday



Sunday 7th July, from 1.00pm-6.00pm

Admission by programme

£4.00 per person – Accompanied children free

Advanced sales at Starbucks News

**On-the-day: Church Lychgate &
Participating Gardens**

Refreshments • Plant Stall

• Local Vocals singing • Garden Raffle

All Proceeds for St. Mary's Church

A.R.T. Churches Contact Details

Rector: Rev. Phyllis Bainbridge 01283 814802 revdphyllisbainbridge@gmail.com
Minister Retired PtO: Rev. Dave Robbins 01283 814051, dave@robbinsdrw.plus.com
Lay Readers: Carol Webster 01283 520868/07715 521935 rolleston1438@yahoo.co.uk
 David Bousie 01283 546457 d.bousie@btinternet.com

ANSLOW

Churchwardens Mark Halsall pm9000@usa.net
 Barry Snaith 07497 109082 b.snaith136@outlook.com
PCC Secretary Ann Lowe 01283 812428
Websites: achurchnearyou.com/anslow anslowvillage.co.uk

ROLLESTON

Churchwardens Bryan Pickering 01283 815378 secsltd@yahoo.com
 Lee Cooke 07973 411431
Deputy Warden David Bousie 01283 546457 d.bousie@btinternet.com
PCC Secretary Kath Pickering 01283 815378
Floodlighting TBA
Gift Aid Officer Robin Skinner 01283 812998
OSGR Contacts Bryan Pickering & Lee Cooke *(See above for details)*
Weddings & Christenings Rev'd Phyllis Bainbridge revdphyllisbainbridge@gmail.com
Rolleston Bellringers Lee Cooke 07973 411431
Websites: Rolleston.org.uk/stmarys yourchurchwedding.org

TUTBURY

Churchwardens Jackie Benstead 01283 814014 info@jackiebenstead.co.uk
 Margaret Pyle 01283 813366 ma.pyle@hotmail.co.uk
Weddings & Christenings Rev'd Phyllis Bainbridge revdphyllisbainbridge@gmail.com
Websites: Glen Evans stmarystutbury.org stmarystutburychurch@gmail.com

Tutbury Bellringers Lee Cooke 07973 411431
Mothers Union Contact: Sue Norris 07817 281695 teddy1915@sky.com

ART Magazine Editor: Philip Norris 07931 841085 philgnorris@gmail.com *

** Contributions are always welcome as space allows. The Magazine costs £3.00 per year and it is normally published 10 times a year. Additional material is supplied from the Parish Pump * Contributions deadline 14th of the Month for the following month's edition*